



## MODULAR VERSATILITY.



The MAWL<sup>®</sup>-C1+<sup>®</sup> is the world's first commercially available NIR and visible green laser aiming device using Class 1+™ technology. The MAWL<sup>®</sup>-C1+<sup>®</sup> retains all of the ergonomic, clarity, modularity, and interface enhancements of the MAWL<sup>®</sup>-DA, and offers more infrared illumination output power than any FDA Class 3R or Class 1 laser on the commercial market.

The MAWL<sup>®</sup>-C1+<sup>®</sup> has significantly greater illumination range as well as improved beam pattern and quality at all ranges compared to other commercially available laser devices.

Part Number : **MAWL-C1+**

20260226 | Copyright ©2025 B.E. Meyers & Co., Inc.

MAWL and C1+ are registered trademarks of B.E. Meyers & Co., Inc.

Important legal information pertaining to the patents and trademarks owned by B.E. Meyers & Co., Inc. is available at [www.bemeyers.com/ip](http://www.bemeyers.com/ip).

All products displayed are subject to U.S. Law, including export control regulations, et al. Export licensing may be required.



CAGE: 6U501  
UEI: XVUVLU5FK1X9

To purchase or for info, contact:  
**+1.425.881.6648**  
**SALES@BEMEYERS.COM**



Proudly made in the USA

[WWW.BEMEYERS.COM](http://WWW.BEMEYERS.COM)

## UNEQUALED NIR ILLUMINATION

B.E. Meyers & Co.™ VCSEL diode technology delivers unmatched near-infrared (NIR) performance, providing users with superior visibility in low-light conditions. This advanced technology enhances beam clarity, which is essential for improving situational awareness.

By producing sharper, more defined illumination, users can better identify their surroundings, assess potential threats, and make informed decisions in various environments.

The combination of exceptional performance and enhanced clarity makes this VCSEL diode technology a crucial asset for applications where precision and awareness are critical.

### BEAM QUALITY

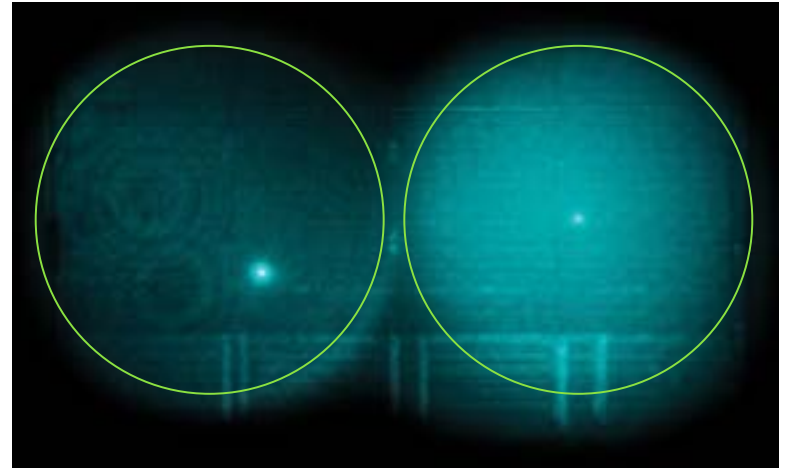
- VCSEL -based emitters deliver a uniform, artifact -free beam at any divergence setting.
- Rapid, intuitive controls allow instant adjustment of divergence and output to match evolving mission demands.
- Consistent laser wavelength minimizes visible red “glow” signature, outperforming LED -based illuminators in low-visibility engagements.
- Co -aligned pointer and illuminators guarantee the aiming laser remains perfectly centered within the illumination beam for consistent point -of - aim/point -of - light alignment.

### BEAM EFFICIENCY

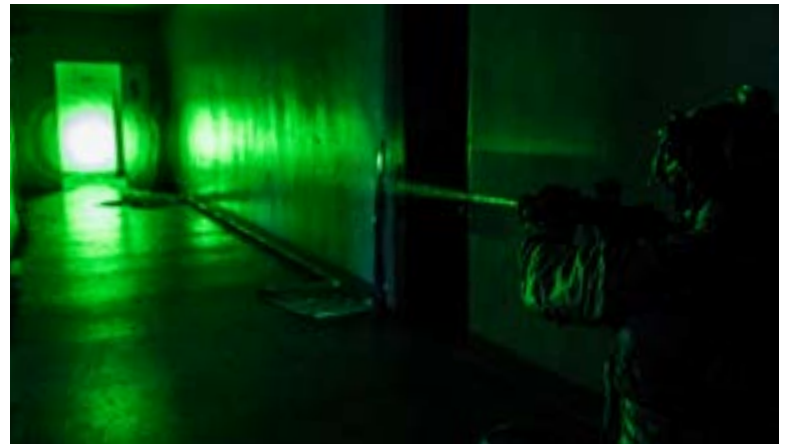
- High -efficiency VCSEL technology extends operational runtime compared to conventional systems.
- Enables higher beam output powers and increased battery life.

### BEAM POWER

- Enables illumination, aiming, and communication at farther distances.
- High output VCEL NIR illuminators punch through photonic barriers and project to extended ranges.



COMPETITOR	B.E. MEYERS™
<ul style="list-style-type: none"> <li>• Uneven Laser Artifacts</li> <li>• Unaligned Point &amp; Flood</li> </ul>	<ul style="list-style-type: none"> <li>• VCSEL Illumination</li> <li>• Co-Aligned Laser &amp; Illuminator</li> </ul>



NOMINAL CHARACTERISTICS	
Dimensions	5.5" L x 2.8" W x 1.8" H
Power Source	3V CR123A Battery (Qty. 1)
Output Modes	OFF // VIS // IR - Short, Mid, Long
Weight	11.1 oz with battery
IR Pointer Divergence (1/e <sup>2</sup> )	0.5 mrad
IR Illuminator Divergences (1/e)	2°, 10°, 60°
VIS Pointer Divergence (1/e <sup>2</sup> )	0.5 mrad
Azimuth & Elevation Adjustments	0.3mrad / 1.03 MOA per click
Environmentally Sealed	MIL-STD-810 Compliant

Part Number : **MAWL-C1+**

20260226 | Copyright ©2025 B.E. Meyers & Co., Inc.

MAWL and C1+ are registered trademarks of B.E. Meyers & Co., Inc.

Important legal information pertaining to the patents and trademarks owned by B.E. Meyers & Co., Inc. is available at [www.bemeyers.com/ip](http://www.bemeyers.com/ip).

All products displayed are subject to U.S. Law, including export control regulations, et al. Export licensing may be required.



CAGE: 6U501  
UEI: XVUVLU5FK1X9

To purchase or for info, contact:  
**+1.425.881.6648**  
**SALES@BEMEYERS.COM**



Proudly made in the USA

**WWW.BEMEYERS.COM**



**B.E. MEYERS**  
ADVANCED PHOTONICS

INFORMATION SHEET

# MAWL<sup>®</sup>-C1+<sup>®</sup>

MODULAR ADVANCED WEAPON LASER  
CLASS ONE LASER



20260226 | Copyright ©2025 B.E. Meyers & Co., Inc.

MAWL and C1+ are registered trademarks of B.E. Meyers & Co., Inc.

Important legal information pertaining to the patents and trademarks owned by B.E. Meyers & Co., Inc. is available at [www.bemeyers.com/ip](http://www.bemeyers.com/ip).

All products displayed are subject to U.S. Law, including export control regulations, et al. Export licensing may be required.



CAGE: 6U501

UEI: XVUVLU5FK1X9

To purchase or for info, contact:

+1.425.881.6648

[SALES@BEMEYERS.COM](mailto:SALES@BEMEYERS.COM)



Proudly made in the USA

[WWW.BEMEYERS.COM](http://WWW.BEMEYERS.COM)



Part Number : **MAWL-C1+**

The MAWL<sup>®</sup>-C1+<sup>®</sup> laser device is a modular aiming and illumination tool that provides enhanced Near Infrared (NIR) illumination quality, streamlines the user interface, and improves weapon handling ergonomics.

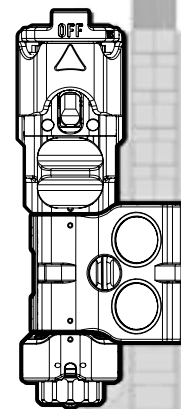
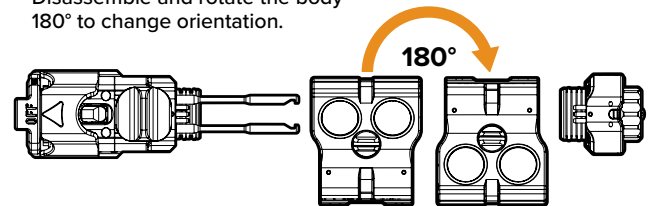
Its compact design offers a superior form-fit-feel compared to traditional systems. With a low-profile activation button just 0.37 inches above the top rail, the device positions most of its bulk off-axis from the operator's grip, enhancing maneuverability.

The MAWL<sup>®</sup>-C1+<sup>®</sup> is well-suited for combat applications across various environments, ranging from close-quarters battle (CQB) to engagements exceeding 1000 meters.

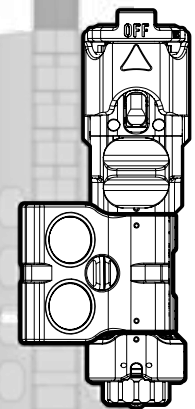


## AMBIDEXTROUS DESIGN

Disassemble and rotate the body 180° to change orientation.



LEFT HAND CONFIGURATION



RIGHT HAND CONFIGURATION

## MODULAR

- The MAWL<sup>®</sup>-C1+<sup>®</sup> is a fully ambidextrous and modular system capable of adapting to different mounting and operation requirements.
- The central housing unit, end cap, and laser head can be easily removed and reconfigured, and other variants of these components can be utilized.
- Modular spare parts increase product life.

## KEY FEATURES

- Co-Aligned Laser Emitters eliminates beam divergence and convergence at different ranges and allows for single zero of all emitters in daylight.
- The MAWL<sup>®</sup>-C1+<sup>®</sup> simplifies and accelerates setting selection with a three-position range switch. Each setting is configured to match different environments and ambient illumination conditions.
- The operator can rapidly select the divergence and output power combination to suit the given conditions.
- ALT or Alternate Programming Mode adjusts the device to perform optimally with specific types of night observation devices. If the MAWL device will be used with Photonis Intens<sup>™</sup> tubes or any other specialty tube models, place the device in ALT mode.

Photonis And Intens are trademarks of Photonis France.  
B.E. Meyers & Co., Inc. is not associated with or sponsored by Photonis France.

20260226 | Copyright ©2025 B.E. Meyers & Co., Inc.

MAWL and C1+ are registered trademarks of B.E. Meyers & Co., Inc.  
Important legal information pertaining to the patents and trademarks owned by B.E. Meyers & Co., Inc. is available at [www.bemeyers.com/ip](http://www.bemeyers.com/ip).

All products displayed are subject to U.S. Law, including export control regulations, et al. Export licensing may be required.



CAGE: 6U501  
UEI: XVUVLU5FK1X9

To purchase or for info, contact:  
+1.425.881.6648  
SALES@BEMEYERS.COM



Proudly made in the USA

WWW.BEMEYERS.COM



**INFRARED (860nm & 852nm)**

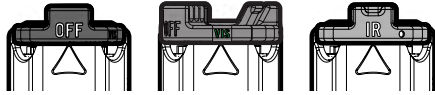
		ILLUMINATOR DIVERGENCE	ILLUMINATOR POWER	POINTER POWER	
TRIPLE CLICK	A	2°	67mW	0.7 mW	
	B	-	-	0.7 mW	
LONG	A	2°	50 mW	0.7 mW	
	B	10°	65 mW	0.7 mW	
MID	A	2°	17 mW	0.7 mW	
	B	10°	13 mW	0.7 mW	
SHORT	A	-	-	0.25 mW	
	B	60°	5 mW	0.25 mW	

**VISIBLE - GREEN (520nm)**

LONG	A	5 mW
	B	5 mW Pulsed @6Hz
MID	A	5 mW
	B	5 mW
SHORT	A	1 mW
	B	1 mW

**MODE SELECT SWITCH**

- Replaceable Propeller Cap
- Rotate to change modes: OFF, VIS, and IR modes.

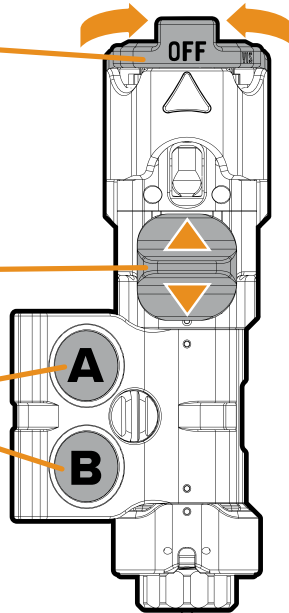


**THREE POSITION RANGE SWITCH**

- Close - Range, Mid - Range, Long - Range
- Extremely tactile and easy to determine range mode by feel.

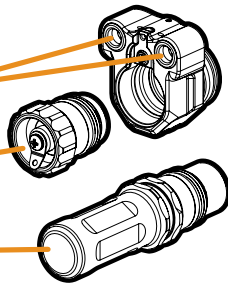
**ACTIVATION BUTTONS (A & B)**

- The A & B buttons activate two different sub - divergences for each engagement range.
- A High - Power "Triple - Click" capability has been added to allow more control at further distances.
- Easily activate your ideal illumination setting in the dark, under stress, or with gloves on.



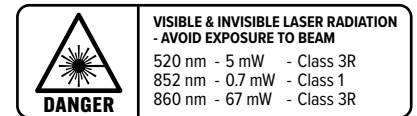
**MAWL® EC2 ENDCAP**

- Two strategically positioned remote fire ports for secure attachment of a remote cable using a CRANE - style connector.
- Features a toolless quick change battery cap.
- Can support multiple power sources: CR123A as standard or AA with a separate End Cap Extension (not included).



**NOMINAL CHARACTERISTICS**

Part Number	MAWL-C1+
Displaced Volume	8.5 in <sup>3</sup>
Dimensions	5.5" L x 2.8" W x 1.8" H
Housing Material	6061-T6 Type II Anodized Aluminum
Power Source	3V CR123A Battery (Qty. 1)
Output Modes	OFF // VIS // IR - Short, Mid, Long
Weight	11.1 oz with battery
IR Pointer Divergence (1/e <sup>2</sup> )	0.5 mrad
IR Illuminator Divergences (1/e)	2°, 10°, 60°
VIS Pointer Divergence (1/e <sup>2</sup> )	0.5 mrad
Azimuth & Elevation Adjustments	0.3mrad / 1.03 MOA per click
Operation Temperature	-20°C to 50°C
Storage Temperature	-40°C to 70°C
Environmentally Sealed	MIL-STD-810 Compliant



IEC60825-1:2014

